



BELO SUN INTERSECTS 55.50 METERS GRADING 2.16 g/t GOLD AT THE GROTA SECA DEPOSIT, BRAZIL

TORONTO, June 27th, 2012 – **Belo Sun Mining Corp.** (TSX:BSX) (the "Company" or "Belo Sun") is pleased to announce assay results from 52 additional drill holes from the diamond drilling program at its Volta Grande Gold Project located in Para State, Brazil. The complete results and selected cross sections are presented below. This release includes results from 26 drill holes from the Ouro Verde deposit and 26 drill holes from the Grota Seca deposit. These holes are part of the drilling program designed to upgrade current inferred mineral resources estimates for the project to the measured and indicated mineral resources categories and continue to expand the estimated mineral resources which will be the basis of the definitive feasibility study. There are several very significant intercepts in this round of results as follows:

- ✓ Hole VVGD-344 (located at Ouro Verde Cross Section 725 NW) has intersected multiple mineralized zones such as **32.00 meters grading 2.20 g/t Au** (from 181.80 meters) including **6.71 meters grading 5.63 g/t Au** (from 182.45 meters).
- ✓ Hole VVGD-360 (located at Ouro Verde Cross Section 275 NW) has intersected multiple mineralized zones such as **31.50 meters grading 2.40 g/t Au** (from 231.00 meters) including **10.40 meters grading 5.31 g/t Au** (from 247.60 meters).
- ✓ Hole VVGD-378 (located at Grota Seca Cross Section 1125 W) has intersected multiple mineralized zones such as **22.10 meters grading 3.00 g/t Au** (from 227.90 meters) including **9.50 meters grading 6.12 g/t Au** (from 229.50 meters).

In addition, there are several results from detailed drill sections (12.5 meters apart) from both the Ouro Verde and Grota Seca deposits, such as Hole VVGD-381 (located at Ouro Verde Cross Section 487.5 NW) with **38.65 meters grading 2.40 g/t Au** (from 43.35 meters) including **16.30 meters grading 3.85 g/t Au** (from 59.70 meters) or VVGD-383 (located at Grota Seca Cross Section 1887.5 W) with **55.50 meters grading 2.16 g/t Au** (from 43.30 meters) including **11.85 meters grading 3.38 g/t Au** (from 53.35 meters). The detail drilling is designed to confirm the continuity between sections used to develop the resource estimates. The detailed sections are at the end of this news release.

Since April 2010 Belo Sun has completed **490 drill holes** covering **132,219** meters of drilling, with assays for 29 holes still pending, and is planning to issue an updated mineral resource estimate in the third quarter of 2013.

Helio Diniz, the Vice President, Exploration for Belo Sun, stated, *"We are very pleased that the drilling is progressing so well with a record drilling production of **11,140 meters** completed last month. We are pleased that the infill drilling continues to provide the information we believe is necessary to upgrade the currently estimated inferred mineral resources to measured and indicated mineral resources, which will be used for the definitive feasibility study. The results from our detailed drilling is confirming that there is good continuity of mineralization and consistent grades thereby providing even further confidence in the deposit model as it moves quickly toward a development phase."*



A complete summary of assays are listed below. The current drilling program is designed to upgrade and expand the existing mineral resource estimate and further results will be released as they become available. The geological map of the Volta Grande Gold Project, with diagrams setting out the main deposit locations, is included below.


TABLE 1 – DIAMOND DRILLING ASSAY RESULTS

The widths reported below represent the core width of the intercepts; true widths are expected to range between 85-95% of the core width.

Ouro Verde Deposit									
Hole #	From (m)	To (m)	Width (m)	Au g/t	Hole #	From (m)	To (m)	Width (m)	Au g/t
VVGD-336	7.00	12.00	5.00	1.63	VVGD-367	39.80	48.80	9.00	0.85
and	36.00	41.80	5.80	0.94	and	73.00	94.00	21.00	0.80
and	116.20	131.00	14.80	1.51	and	109.00	114.44	5.44	2.71
including	124.00	130.15	6.15	2.93	and	130.00	149.35	19.35	0.95
and	191.40	220.40	29.00	2.54	and	154.00	178.30	24.30	0.99
including	202.75	209.60	6.85	6.04	and	209.30	219.41	10.11	2.88
and	240.70	244.80	4.10	1.59	and	224.75	233.10	8.35	1.37
and	259.15	281.10	21.95	1.54	and	236.70	247.54	10.84	0.96
and	328.00	338.50	10.50	1.42	VVGD-369	NSR			
VVGD-343	0.00	10.00	10.00	0.98	VVGD-371	1.00	11.00	10.00	0.98
and	22.75	34.70	11.95	1.01	and	93.24	105.10	11.86	2.05
VVGD-344	0.00	4.00	4.00	1.01	and	110.00	122.20	12.20	0.82
and	15.00	19.00	4.00	0.53	and	135.20	145.09	9.89	2.56
and	37.40	46.60	9.20	2.11	VVGD-374	0.00	9.50	9.50	0.76
and	54.95	60.22	5.27	3.81	and	26.50	31.60	5.10	1.92
and	71.60	81.58	9.98	0.86	and	77.00	80.75	3.75	0.66
and	102.15	105.51	3.36	0.82	and	85.80	93.50	7.70	4.37
and	181.80	213.80	32.00	2.20	and	98.00	103.20	5.20	0.71
including	182.45	189.16	6.71	5.63	VVGD-375	15.00	19.50	4.50	0.68
and	220.60	225.09	4.49	1.40	and	134.00	138.45	4.45	0.59
and	275.69	281.87	6.18	0.67	and	219.00	227.00	8.00	0.51
and	323.55	328.15	4.60	1.29	and	237.00	244.30	7.30	3.04
and	334.40	347.90	13.50	0.70	and	254.00	278.90	24.90	0.58
VVGD-346	128.00	135.10	7.10	2.71	and	326.00	329.00	3.00	1.04
and	147.20	150.35	3.15	0.78	VVGD-376	20.00	26.30	6.30	1.82
and	216.00	233.85	17.85	1.74	and	67.40	70.40	3.00	1.54
including	227.53	233.85	6.32	3.62	and	86.90	95.75	8.85	1.63
and	237.85	242.76	4.91	0.88	and	116.00	122.00	6.00	6.44
and	255.90	263.63	7.73	2.59	and	194.40	201.00	6.60	3.25
and	268.12	286.80	18.68	2.79	and	219.00	222.00	3.00	0.74
including	271.34	276.90	5.56	5.86	and	237.00	241.00	4.00	0.63
and	310.40	316.68	6.28	0.90	and	250.40	271.30	20.90	1.22
and	333.65	336.66	3.01	3.22	including	250.40	258.00	7.60	2.12
and	347.62	353.20	5.58	0.55	and	276.00	280.60	4.60	1.01
and	371.06	376.20	5.14	2.14	and	288.00	298.00	10.00	0.90
and	410.00	421.60	11.60	1.08	and	302.40	310.00	7.60	2.20
and	430.80	434.00	3.20	1.06	and	317.90	323.20	5.30	1.10
VVGD-347	115.00	120.84	5.84	0.84	and	329.00	332.00	3.00	2.04
and	132.00	135.00	3.00	0.76	and	423.00	427.00	4.00	1.61
and	142.00	145.00	3.00	0.82	and	437.90	441.00	3.10	1.56
and	179.00	193.90	14.90	1.68					
and	244.00	262.74	18.74	2.65					
and	272.70	298.40	25.70	1.26					
and	308.00	311.00	3.00	0.63					
and	321.80	325.00	3.20	1.97					



Ouro Verde Deposit									
Hole #	From (m)	To (m)	Width (m)	Au g/t	Hole #	From (m)	To (m)	Width (m)	Au g/t
VVGD-349	0.00	8.00	8.00	0.53	VVGD-381	43.35	82.00	38.65	2.40
and	98.62	109.78	11.16	2.94	including	59.70	76.00	16.30	3.85
and	171.97	182.15	10.18	1.04	and	128.00	140.40	12.40	3.12
VVGD-354	14.00	20.00	6.00	0.76	VVGD-385	0.00	9.00	9.00	0.78
and	25.05	34.45	9.40	0.71	and	30.85	48.30	17.45	1.18
and	141.40	149.63	8.23	1.72	and	112.40	124.25	11.85	1.60
and	155.05	160.90	5.85	0.71	VVGD-387	18.00	27.00	9.00	0.68
and	173.05	178.55	5.50	1.83	and	46.00	52.10	6.10	1.29
and	201.60	212.00	10.40	2.56	and	111.00	127.00	16.00	1.07
VVGD-355	172.00	175.00	3.00	0.53	and	144.00	147.40	3.40	0.59
and	202.62	216.00	13.38	0.87	and	232.40	237.00	4.60	0.62
and	244.44	253.00	8.56	0.98	and	243.00	253.75	10.75	0.78
and	270.00	286.00	16.00	2.03	VVGD-388	25.00	29.62	4.62	2.07
including	275.70	281.20	5.50	4.12	and	39.00	58.62	19.62	1.37
and	363.20	380.00	16.80	1.12	and	68.00	73.05	5.05	0.67
and	387.00	405.00	18.00	1.14	and	84.00	94.60	10.60	0.64
and	415.86	424.00	8.14	0.71	VVGD-391	0.00	5.80	5.80	0.57
and	432.15	451.00	18.85	1.75	and	31.00	36.00	5.00	0.77
including	432.15	439.00	6.85	3.87	and	97.34	103.40	6.06	1.23
VVGD-356	192.70	202.10	9.40	1.21	and	108.00	119.00	11.00	1.39
and	221.43	226.20	4.77	2.03	and	135.00	141.20	6.20	1.72
and	285.30	288.90	3.60	2.72	and	149.00	167.00	18.00	1.45
VVGD-358	383.34	395.87	12.53	0.96	and	182.00	187.00	5.00	2.35
and	400.86	406.45	5.59	0.92	and	219.30	225.80	6.50	3.13
VVGD-359	21.30	26.65	5.35	1.56	VVGD-393	2.00	5.00	3.00	2.41
and	37.30	43.00	5.70	1.86	and	13.00	18.00	5.00	0.55
and	53.50	61.50	8.00	0.83	and	50.30	56.00	5.70	2.25
and	67.60	81.88	14.28	2.27	and	72.00	80.30	8.30	1.87
and	95.00	125.25	30.25	1.81	and	85.00	102.00	17.00	1.87
including	104.10	109.40	5.30	6.83	VVGD-394	95.00	98.20	3.20	1.05
VVGD-360	120.00	124.20	4.20	0.57	and	104.28	107.70	3.42	2.29
and	128.00	132.40	4.40	0.60	and	195.35	216.80	21.45	1.30
and	150.00	156.40	6.40	0.72	including	199.00	204.60	5.60	3.33
and	164.65	174.20	9.55	9.31	and	224.00	243.75	19.75	0.97
and	198.00	211.00	13.00	0.61	including	224.00	232.15	8.15	1.34
and	221.00	226.00	5.00	2.78	and	249.50	253.80	4.30	0.68
and	231.00	262.50	31.50	2.40	and	257.32	266.53	9.21	0.51
including	247.60	258.00	10.40	5.31	VVGD-398	13.00	19.80	6.80	1.91
and	270.75	279.17	8.42	1.39	and	115.80	119.00	3.20	0.66
and	327.44	333.00	5.56	1.60	VVGD-402	7.00	24.20	17.20	0.54
					and	33.40	37.45	4.05	1.25
					and	110.00	117.35	7.35	1.11
					VVGD-403	0.00	7.00	7.00	0.87
					and	168.00	183.71	15.71	9.15



Grota Seca Deposit									
Hole #	From (m)	To (m)	Width (m)	Au g/t	Hole #	From (m)	To (m)	Width (m)	Au g/t
VVGD-341	55.00	61.20	6.20	1.03	VVGD-370	47.00	52.00	5.00	0.63
and	95.63	100.70	5.07	3.80	and	57.00	64.00	7.00	0.83
and	116.80	124.20	7.40	0.60	and	68.00	82.80	14.80	0.73
and	133.90	137.00	3.10	0.57	and	93.00	125.95	32.95	0.89
and	153.80	161.00	7.20	0.81	VVGD-372	NSR			
and	168.00	176.20	8.20	2.18	VVGD-373	87.00	95.32	8.32	0.92
and	247.70	256.85	9.15	3.26	and	109.15	124.80	15.65	0.75
and	309.85	326.80	16.95	0.83	and	128.18	157.00	28.82	0.97
and	332.90	342.76	9.86	1.20	VVGD-377	36.00	42.00	6.00	1.17
VVGD-342	13.60	24.55	10.95	0.76	and	76.00	106.60	30.60	1.47
and	127.00	140.00	13.00	0.66	including	95.00	103.60	8.60	2.55
and	147.00	154.90	7.90	2.09	VVGD-378	94.00	103.85	9.85	0.92
and	179.90	187.00	7.10	0.50	and	124.00	128.00	4.00	1.04
and	211.00	215.00	4.00	0.98	and	139.45	149.00	9.55	0.77
and	285.00	291.40	6.40	1.05	and	227.90	250.00	22.10	3.00
VVGD-350	236.00	242.00	6.00	0.71	including	229.50	239.00	9.50	6.12
and	263.95	274.05	10.10	0.74	and	255.15	258.00	2.85	8.40
and	289.69	313.24	23.55	0.78	and	275.80	289.40	13.60	0.83
and	328.65	332.65	4.00	1.81	VVGD-379	NSR			
and	342.25	349.00	6.75	0.74	VVGD-383	7.45	33.40	25.95	1.01
and	361.00	365.00	4.00	0.63	and	43.30	98.80	55.50	2.16
VVGD-352	116.70	125.60	8.90	1.09	including	53.35	65.20	11.85	3.38
and	134.40	142.00	7.60	3.90	VVGD-384	NSR			
and	317.60	324.20	6.60	2.00	VVGD-389	0.00	5.00	5.00	0.76
and	348.00	352.20	4.20	1.06	and	79.00	83.00	4.00	0.81
VVGD-353	140.00	144.00	4.00	0.55	and	99.00	103.50	4.50	2.23
and	167.00	171.00	4.00	1.17	and	163.00	169.00	6.00	0.90
and	209.30	217.85	8.55	0.64	VVGD-390	134.80	148.00	13.20	0.66
and	327.62	336.40	8.78	1.81	and	157.00	162.00	5.00	0.64
VVGD-361	2.00	7.33	5.33	1.34	VVGD-392	100.10	109.70	9.60	0.70
and	12.65	51.30	38.65	2.65	VVGD-395	0.00	10.00	10.00	0.51
including	24.40	43.00	18.60	4.77	and	27.95	41.00	13.05	0.74
VVGD-362	185.00	189.28	4.28	1.22	and	45.80	50.30	4.50	1.60
and	194.23	198.00	3.77	0.70	and	61.00	73.05	12.05	0.76
and	224.05	234.53	10.48	0.55	and	90.70	95.00	4.30	1.07
and	243.05	272.45	29.40	1.13	and	166.20	172.48	6.28	0.56
and	293.25	298.45	5.20	1.23	and	210.50	214.00	3.50	0.85
and	304.20	309.50	5.30	0.53	and	236.10	245.00	8.90	0.59
and	371.07	375.25	4.18	0.78	and	278.80	284.25	5.45	2.45
					and	325.00	333.00	8.00	0.87



Grota Seca Deposit										
Hole #	From (m)	To (m)	Width (m)	Au g/t		Hole #	From (m)	To (m)	Width (m)	Au g/t
VVGD-363	0.00	6.28	6.28	0.79		VVGD-401	0.00	3.00	3.00	1.11
and	15.10	50.73	35.63	2.37		and	11.00	22.00	11.00	0.83
including	20.07	33.00	12.93	5.04		and	53.15	60.65	7.50	1.39
and	68.10	73.13	5.03	0.66		and	111.00	115.00	4.00	0.56
VVGD-364	68.30	75.00	6.70	0.59		and	134.00	139.00	5.00	0.55
and	85.20	99.00	13.80	1.01		and	157.06	164.05	6.99	1.62
and	121.00	128.39	7.39	0.62		and	184.22	209.00	24.78	1.67
and	169.38	174.80	5.42	1.95		VVGD-406	NSR			
VVGD-366	0.00	19.75	19.75	0.89		VVGD-421	4.00	7.25	3.25	1.28
and	42.25	67.69	25.44	1.84		and	48.86	53.00	4.14	1.42
including	55.30	65.00	9.70	3.75		and	135.50	141.13	5.63	1.46
and	80.15	84.24	4.09	6.89		and	148.60	152.15	3.55	0.54
VVGD-368	140.62	145.00	4.38	1.73						
and	192.00	213.40	21.40	0.64						
and	232.86	239.00	6.14	0.53						
and	255.00	273.00	18.00	0.58						
and	280.00	284.00	4.00	1.03						

Quality Assurance and Quality Control

The scientific and technical information in this press release has been reviewed and approved by David Gower, P. Geo., an advisor to Belo Sun and a Qualified Person as defined by National Instrument 43-101. The exploration program is directly supervised by Mr. Carlos Cravo, P. Geo., Belo Sun's exploration manager. Belo Sun's procedures for handling drill core comprise initial description and logging into a Microsoft Access database. Mineralized, suspected mineralized or not intervals in the drill holes are described in detail and marked for sampling. Core is then cut in half with the right-hand portion of the core put into plastic sample bags and sealed. The left-hand portion is returned to the core box and is stored for future reference or study. Assay standard and "Blank" samples are inserted every 20th sample. These samples are then delivered to ACME Labs sample preparation facility at the Project site. The assay samples are then fine-crushed to better than 80% passing 10 mesh screens, with an assay pulp split of up to 1000 grams pulverized to better than 85% passing 200 mesh screen. Samples are assayed at ACME Labs in Santiago, Chile, using a 50 gram fire assay with AAS finish. These QA/QC procedures provide several measures of data quality and assure the Company that the assay data is representative of the original sample.



About the Company

Belo Sun Mining Corp. is a Canadian-based mineral exploration company with a portfolio of properties focused on gold in Brazil. Belo Sun's primary focus is on advancing and expanding its 100% owned Volta Grande Gold Project, located in Para State. Belo Sun trades on the TSX under the symbol "BSX". For more information about Belo Sun please visit www.belosun.com.

Cautionary Statement on Forward Looking Information

This press release contains "forward-looking information" within the meaning of applicable Canadian securities legislation. Forward-looking information includes, without limitation, statements regarding the impact of these drill results on the Company and its understanding of the project; statements with respect to the development potential and timetable of the project; the estimation of mineral resources; realization of mineral resource estimates; the timing and amount of estimated future exploration; costs of future activities; capital and operating expenditures; success of exploration activities; currency exchange rates; government regulation of mining operations; and environmental risks. Generally, forward-looking information can be identified by the use of forward-looking terminology such as "plans", "expects" or "does not expect", "is expected", "budget", "scheduled", "estimates", "forecasts", "intends", "anticipates" or "does not anticipate", or "believes", or variations of such words and phrases or state that certain actions, events or results "may", "could", "would", "might" or "will be taken", "occur" or "be achieved". Forward-looking information is subject to known and unknown risks, uncertainties and other factors that may cause the actual results, level of activity, performance or achievements of the Company to be materially different from those expressed or implied by such forward-looking information, including risks inherent in the mining industry and risks described in the public disclosure of the Company which is available under the profile of the Company on SEDAR at www.sedar.com and on the Company's website at www.belosun.com. Although the Company has attempted to identify important factors that could cause actual results to differ materially from those contained in forward-looking information, there may be other factors that cause results not to be as anticipated, estimated or intended. There can be no assurance that such information will prove to be accurate, as actual results and future events could differ materially from those anticipated in such statements. Accordingly, readers should not place undue reliance on forward-looking information. The Company does not undertake to update any forward-looking information, except in accordance with applicable securities laws.

For further information, please contact:

Mark Eaton, President and CEO

Belo Sun Mining Corp.

(416) 309-2137



Figure 1 – Ouro Verde Geological Map

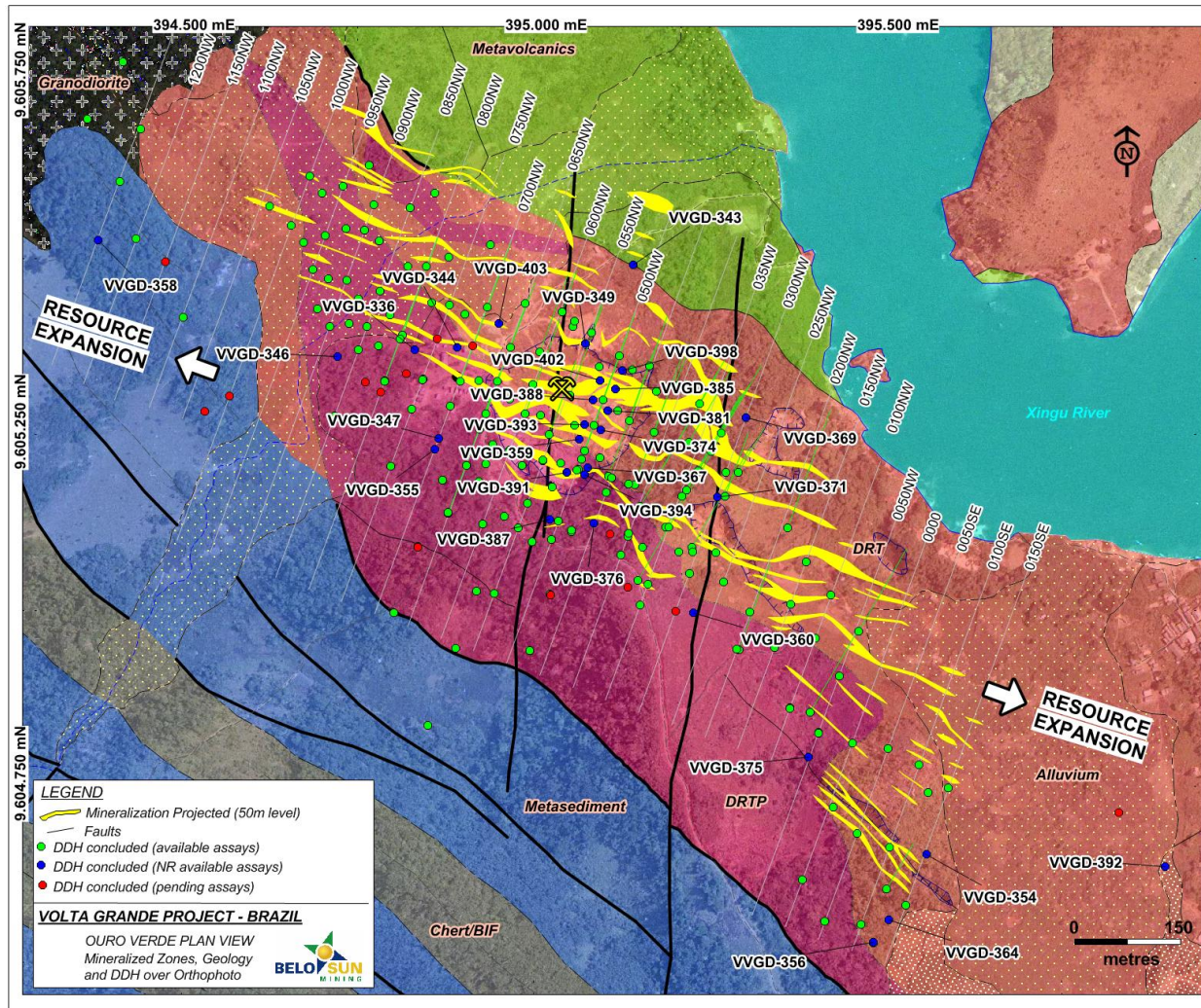
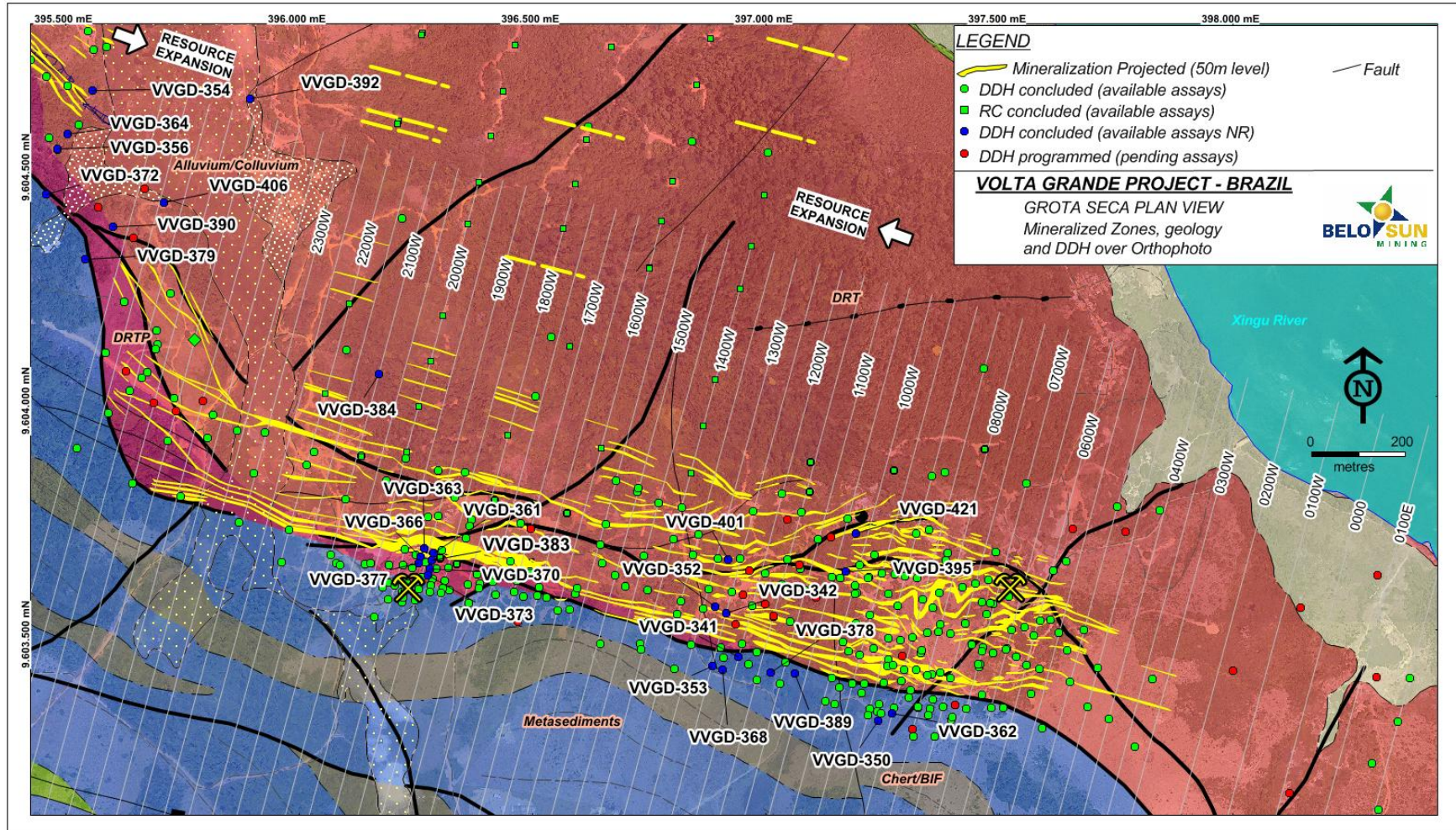


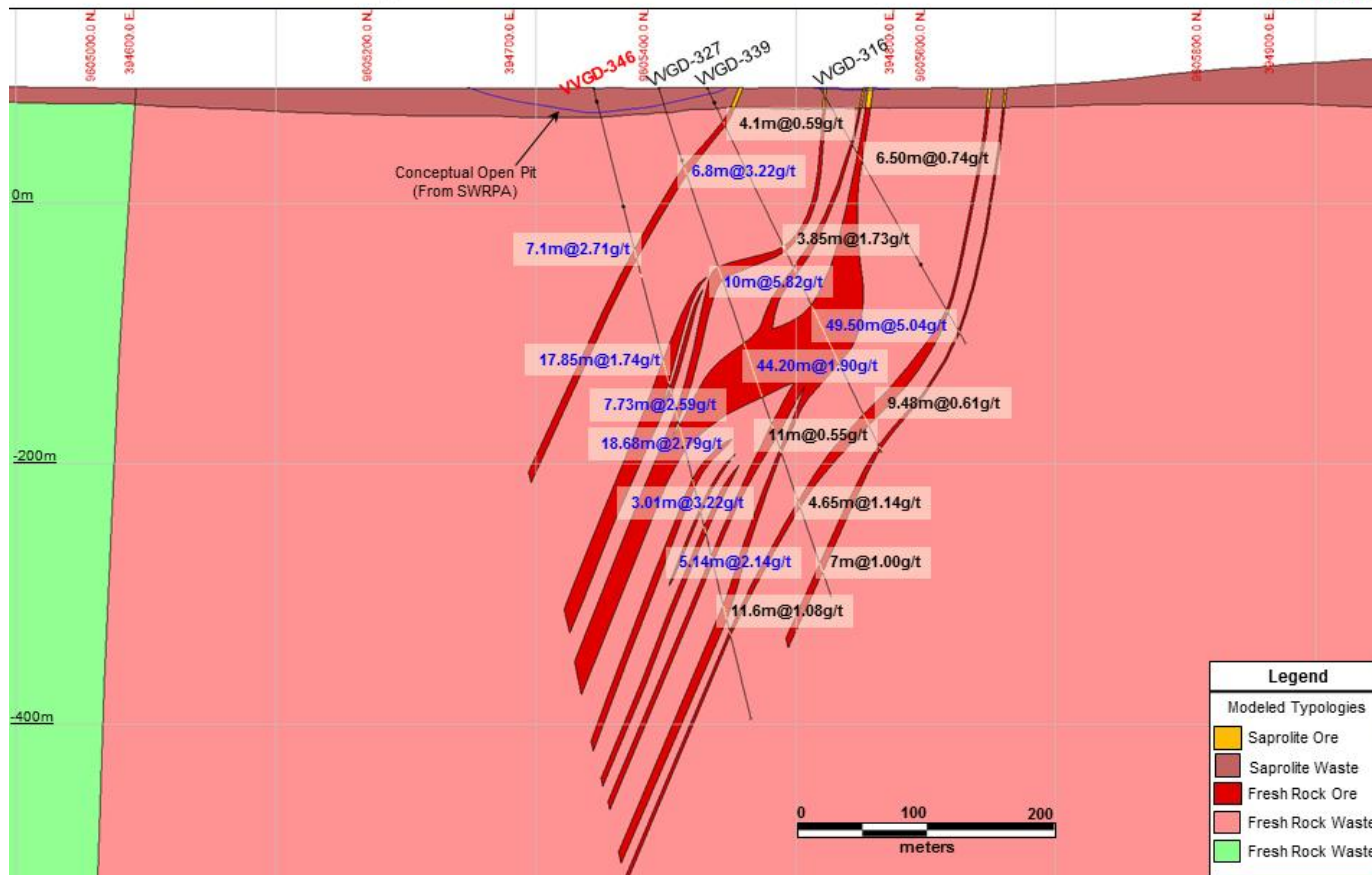


Figure 2 – Grota Seca Geological Map





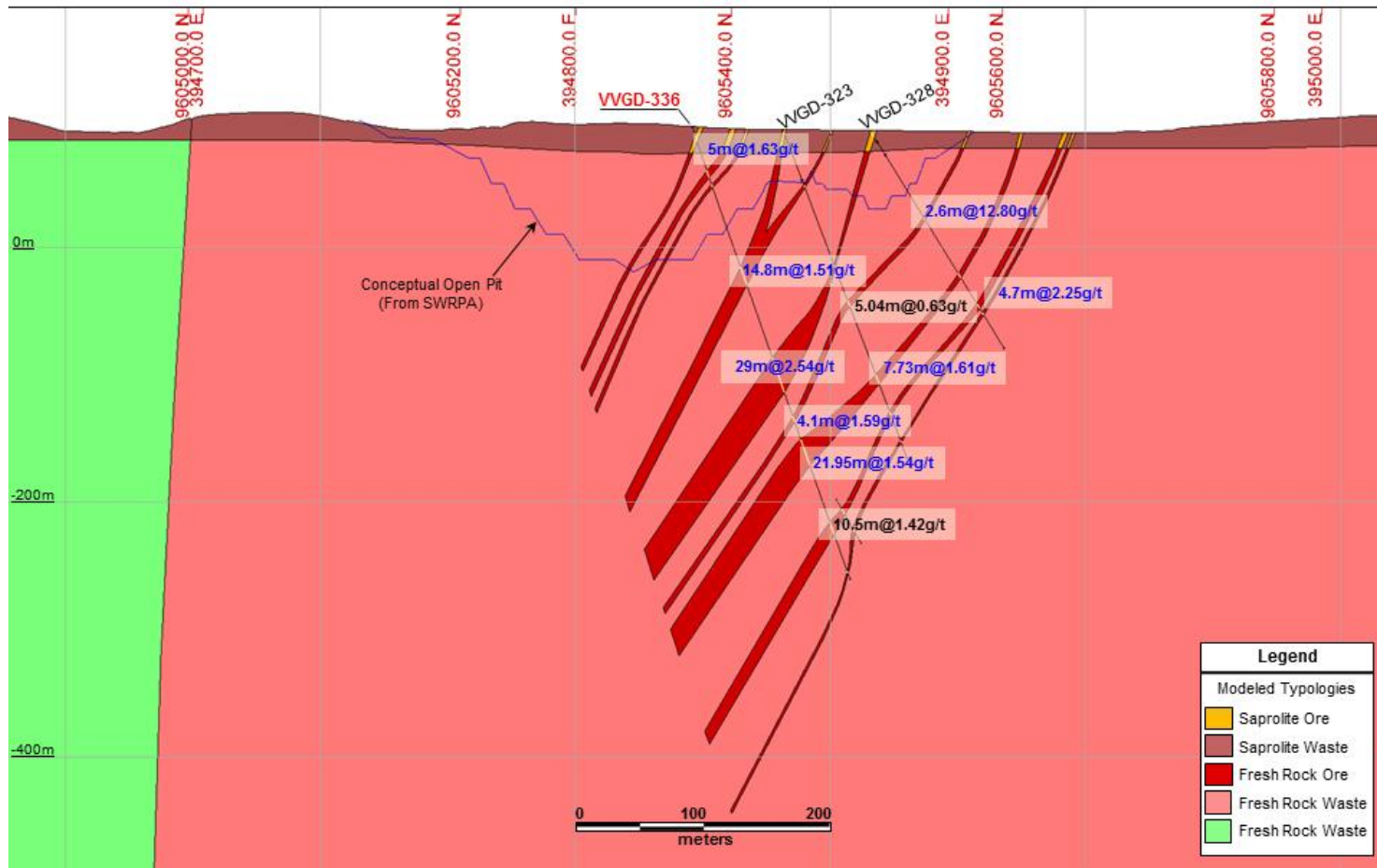
Volta Grande Gold Project Ouro Verde Deposit - Cross Section 875 NW





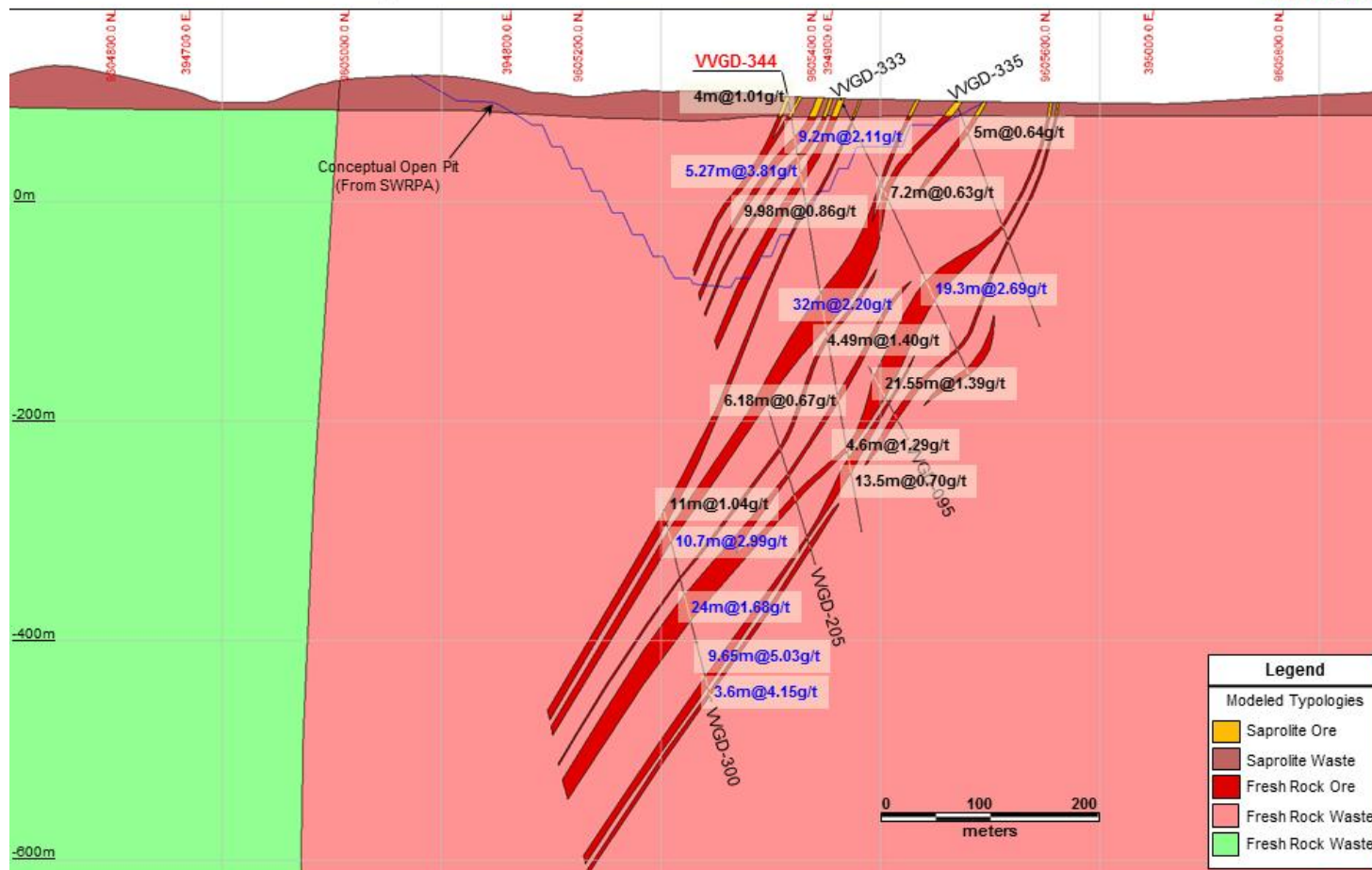
Volta Grande Gold Project

Ouro Verde Deposit - Cross Section 775 NW





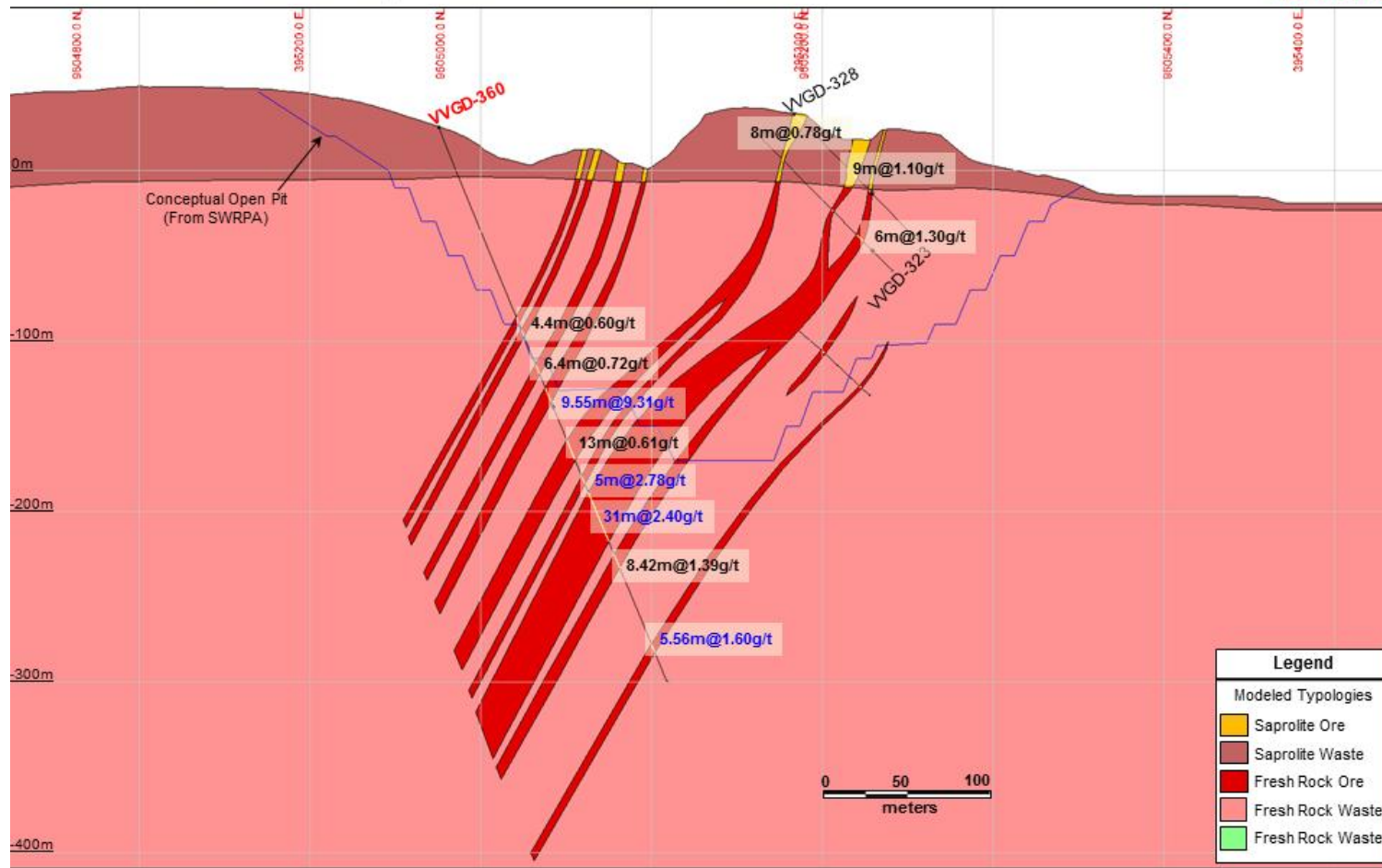
Volta Grande Gold Project Ouro Verde Deposit - Cross Section 725 NW





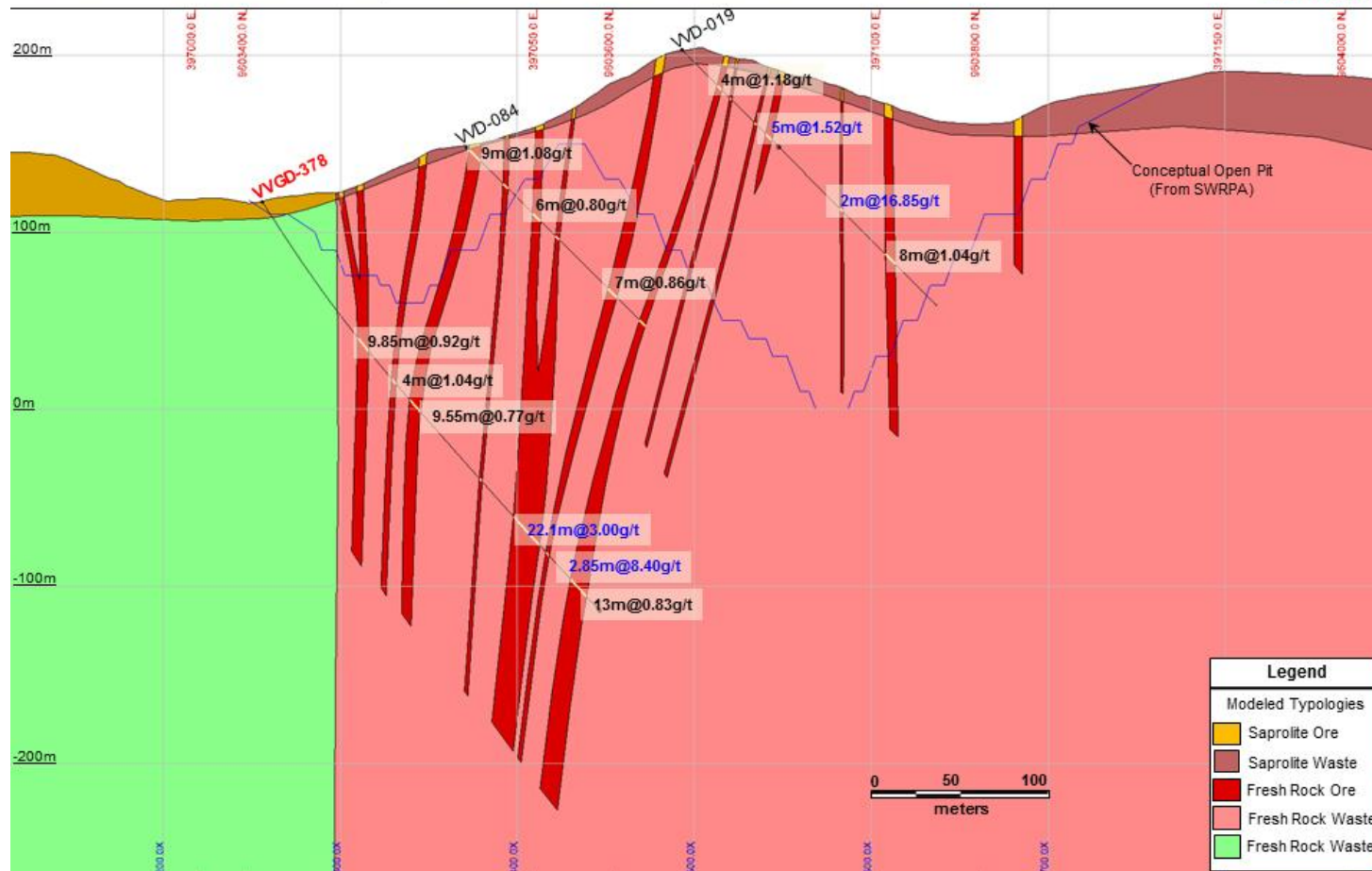
Volta Grande Gold Project

Ouro Verde Deposit - Cross Section 275 NW



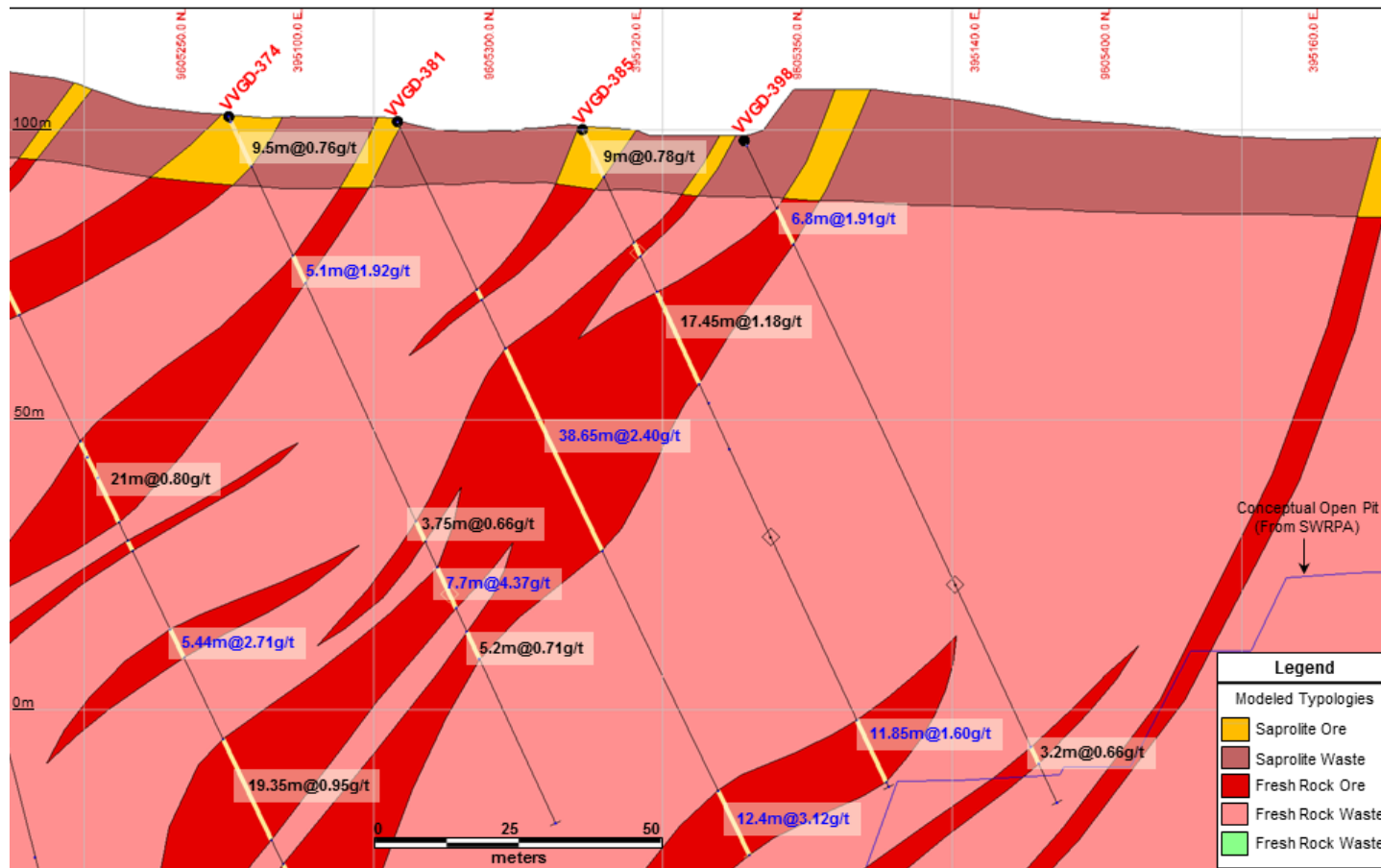


Volta Grande Gold Project Grota Seca Deposit - Cross Section 1125 W



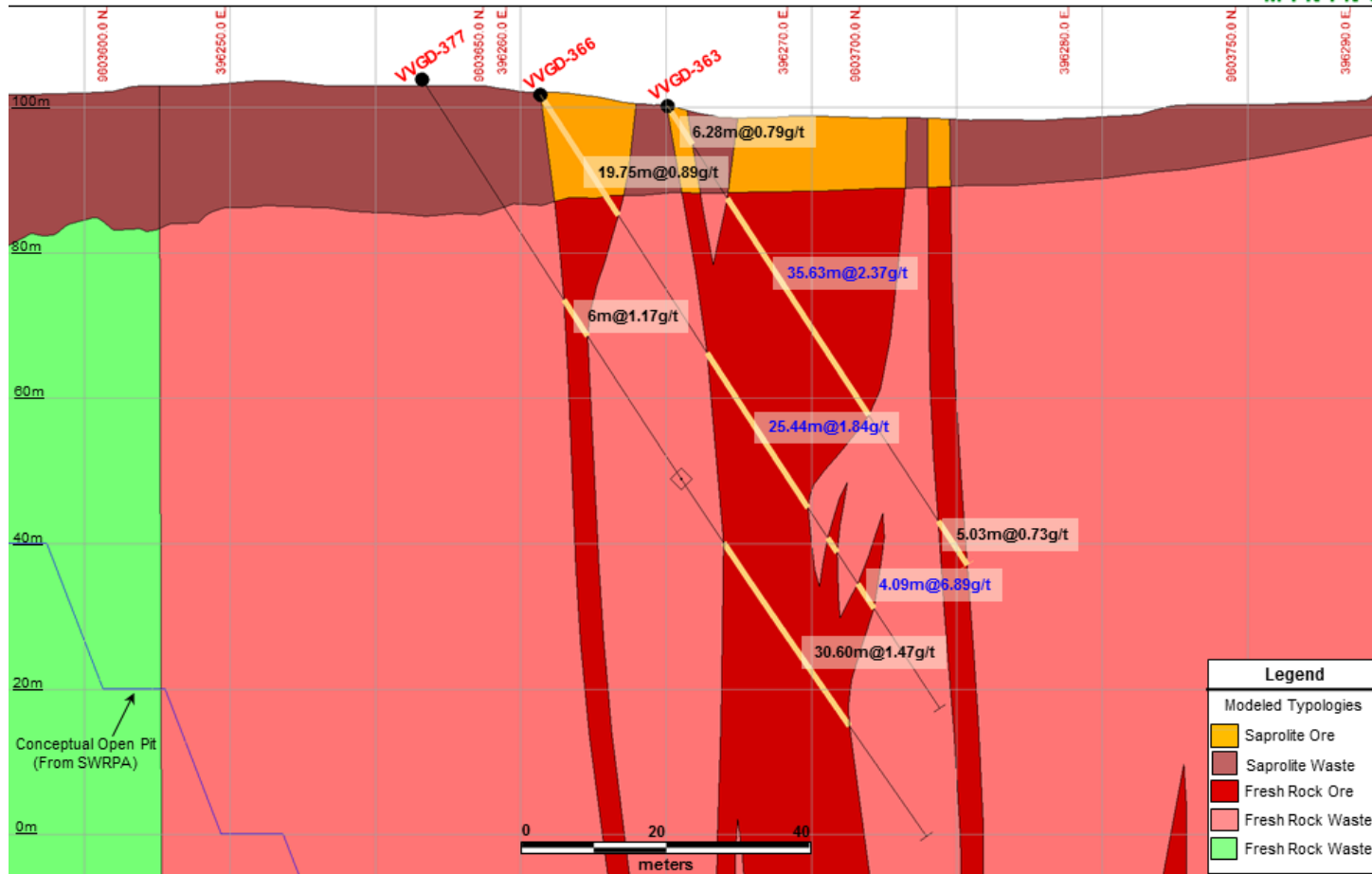


Volta Grande Gold Project Ouro Verde Deposit - Cross Section 487.5 NW





Volta Grande Gold Project Grota Seca Deposit - Cross Section 1912.5 W





Volta Grande Gold Project Grota Seca Deposit - Cross Section 1887.5 W

